

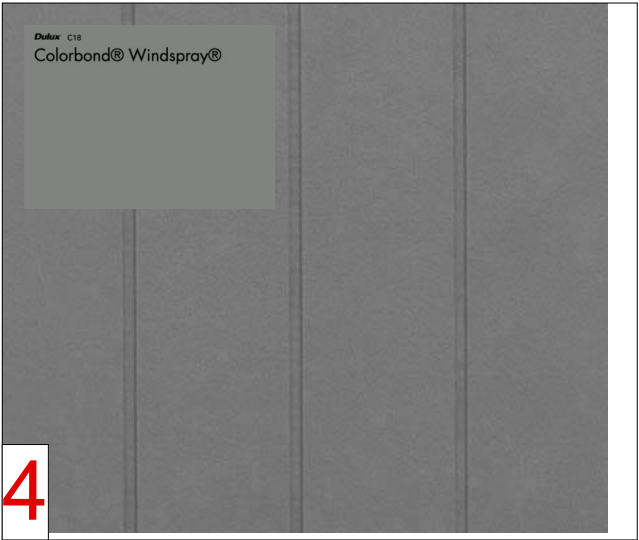
Corrugated Roof Sheetting
Dulux Colorbond - momument or similar



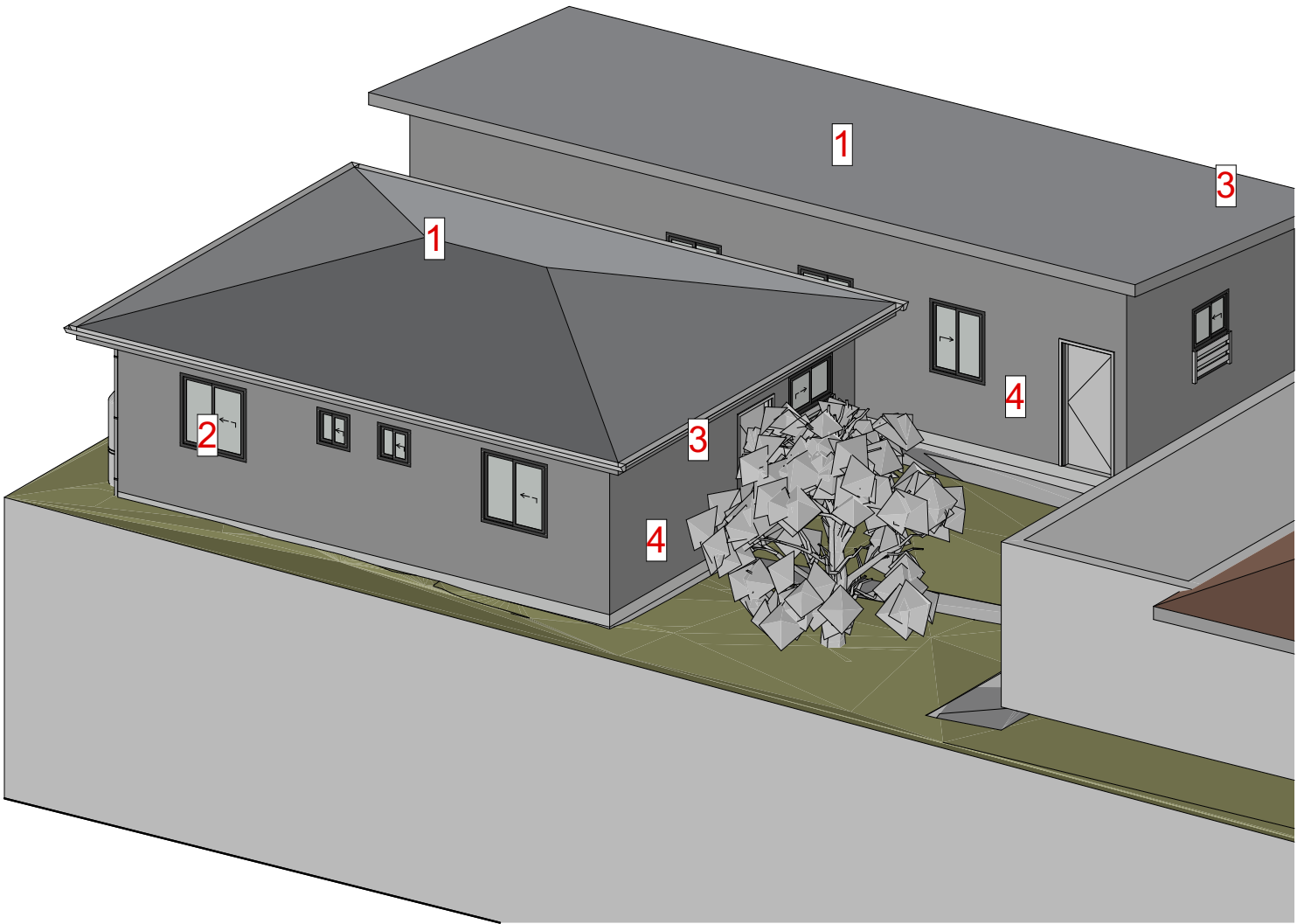
Doors & Windows - Aluminium / Steel
Powder Coat - Black




Fascia, Gutters & Down Pipes - Steel
Dulux - Monument color or similar



External Wall - FC Cladding
Boral Scyon Axon Smooth 133 or similar
Dulux Colorbond - Windspray



Issue	Description	Date	AS - ALUMINIUM ROOF SHEETING	AL - ALUMINIUM	AD - ALUMINIUM DOOR	GB - GLASS BALUSTRADE	<div>THE WORK IS TO BE COMPLETED WITH THE BUILDING CODE OF AUSTRALIA, AND RELEVANT BY-LAWS.</div> <div>THE BUILDER/MANUFACTURER SHALL CHECK AND VERIFY ALL DIMENSIONS, RL GROUND LINES AND CONSTRUCTION METHODS PRIOR TO COMMENCEMENT OF WORK.</div> <div>PREFERENCE OF DIMENSIONED MEASUREMENTS TO BE TAKEN OVER SCALED MEASUREMENTS. DO NOT SCALE OFF DRAWINGS.</div> <div>VERIFY ALL DISCREPANCIES WITH THE DESIGNER.</div> <div>THESE DRAWINGS HAVE BEEN PREPARED BY LUMINOUS DESIGN & PLANNING AND REMAIN THE PROPERTY OF THE ABOVE NAMED PART. THESE DRAWINGS ARE NOT TO BE USED IN ANY WAY WITHOUT THE PERMISSION AND ARE SUBJECT TO COPY RIGHT LAWS.</div>	<div></div> <div>LUMINOUS</div> <div>design & planning</div>	Project:	PROPOSED NEW SECONDARY DWELLING & OUTBUILDING	Drawing ID:	DA.035
A	FOR CLIENT REVIEW	25/03/2025	CT - CONCRETE ROOF TILE	AC - ALUMINIUM CLADDING	AW - ALUMINIUM WINDOW	SB - STEEL BALUSTRADE			Drawing Title:	MATERIAL SAMPLE BOARD		
B	ISSUE FOR DA	27/06/2025	RT - ROOF TILE	FC - FIBRE CEMENT	TD - TIMBER DOOR	S - SMOKE ALARM			Project Site:	5 Wolumba Street Chester Hill NSW 2162		
			BW - FACE BRICK WORK	TC - TIMBER CLADDING	MV - MECHANICAL VENTILATION	W - NEW WINDOW			Client:	XINYI CHEN	Scale:	
			CR - CEMENT RENDER	SC - STONE CLADDING	FW - FLOOR WASTE	D - NEW DOOR			Date:	Friday, 27 June 2025	Issue:	B
										Drawn by:	S.Y.	